

ENHANCING STYLE AND COMFORT

ACCESSIBLE DESIGN

DESIGN
MEETS
FUNCTION



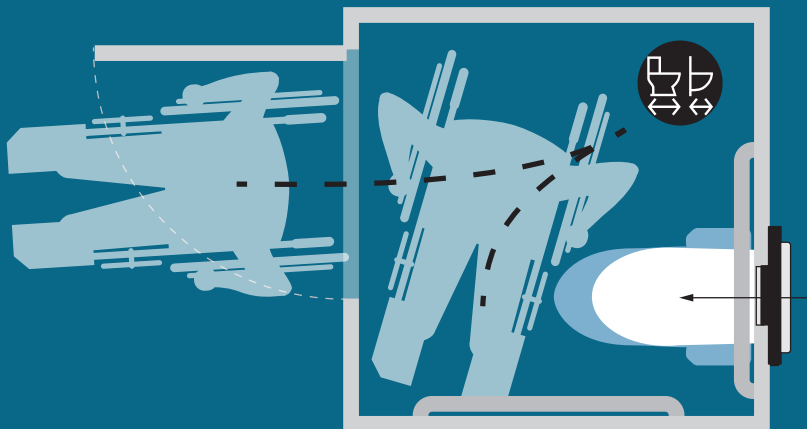
DESIGN FOR ALL

Whether the toilet compartment is intended for ambulatory or wheelchair occupants, home or public spaces, specifying a Geberit in-wall tank and carrier system combined with a wall-hung toilet bowl is safer and more accessible. Geberit makes it easier for anyone to live a bit more independently.

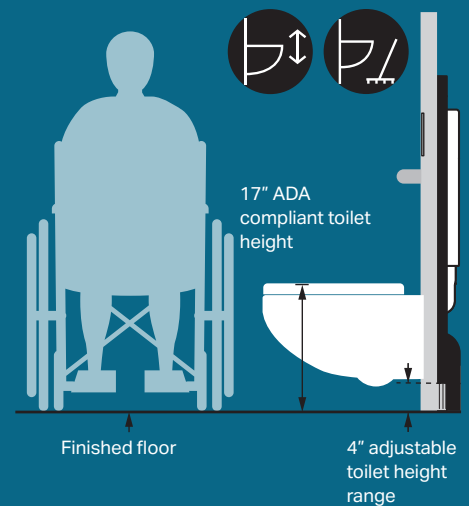
Greater Mobility

Eliminating the tank on the toilet allows greater mobility in the compartment and reduces the potential for injury.

Illustration showing minimum floor space required for ADA compliant bathroom compartment (60"W x 52"D)¹.



Adjustable Height



¹ When used in conjunction with wall-mounted toilet fixtures, 56" is allowed reduced minimum distance per to ANSI A117.1, Section 604.9.2.1

Wall-Hung Convenience



CLEANING

Easy to clean the entire floor with a mop. No bending or kneeling.



SAVES SPACE

Takes up less space than a standard toilet for greater flexibility, safety, and comfort in the smallest spaces.



EASY TO MAINTAIN

The Geberit valve eliminates problematic chains and flappers that corrode and fail. Working parts are easily accessed through the stylish flush and cover plates.



The fill and flush valves and supply stop are located behind the wall. If maintenance is required, all working parts are easily accessed through the flush plate or cover plate.

Carrier Frame Basics



FLEXIBILITY IS STANDARD

The system fits in 2x4 or 2x6 walls. Adjustable height allows the Geberit system to easily accommodate the toilet seat height from 15 inches (380 mm) minimum to 19 inches (485 mm) to meet personal preference or local ADA guidelines including ANSI A117.1.



MAXIMUM SUPPORT

The rugged steel frame of the in-wall system is capable of supporting up to 880 pounds (400 kg), exceeding ASME A112.6.2 strength requirements.



Tank and Valves



INSULATED TANK

The impact-resistant high-density tank is guaranteed against leaks and insulated to prevent condensation.



WATER SAVING DUAL-FLUSH

Dual-flush volumes of 1.6/0.8 GPF (6/3 LPF) or 1.28/0.8 GPF (4.8/3 LPF) exceed high efficiency toilet standards. You can even qualify for EPA WaterSense rebates or green building points.

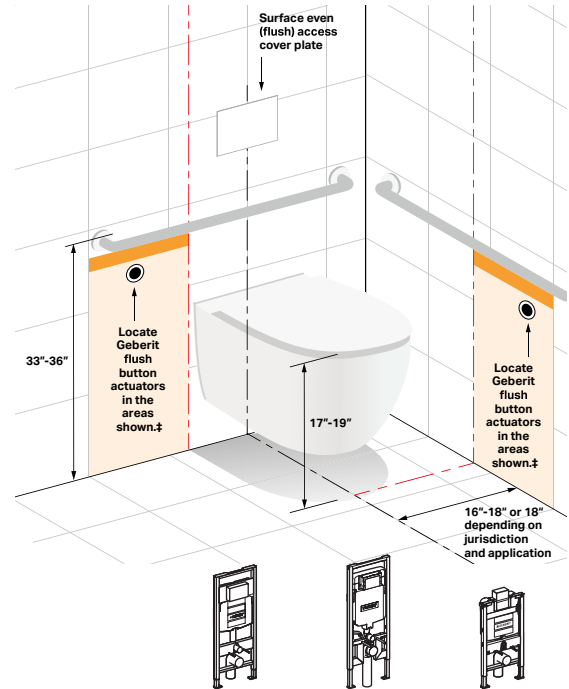
ADA INSTALLATION GUIDELINES

CONVENIENCE AND ACCESSIBILITY

Geberit Type 10 IR hands-free, touchless activation helps prevent the spread of germs, perfect for private or semi-public bathrooms where users are looking for the ultimate in comfort, convenience, and hygiene. Type 10 IR touchless buttons are easy to use: wave a hand near the sensor. Continue to hold hand in front and benefit from built-in user initiated dual-flush operation.



Type 10 IR

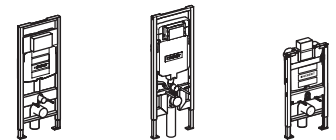
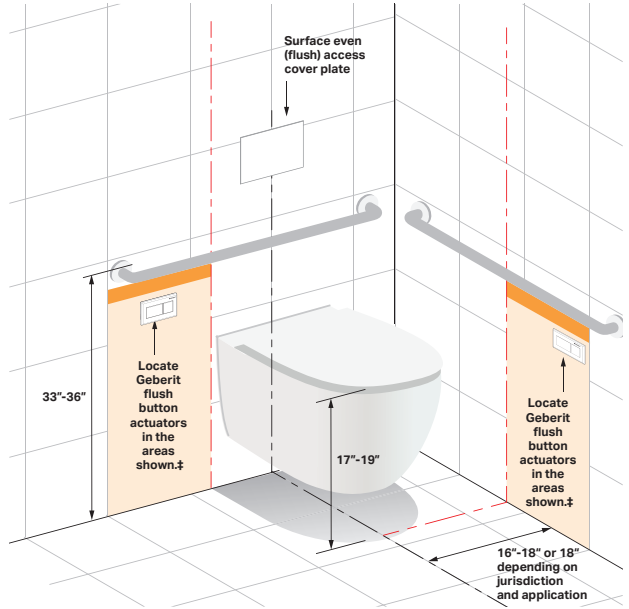


Style	Actuation	Flush	Material	Finish	1.6/0.8 GPF	111.335.00.5	111.798.00.1	111.012.00.1	
					1.28/0.8 GPF	111.902.00.5	111.597.00.1	111.018.00.1	
Dual-Flush Buttons for Concealed or Furniture/Cabinet Installations									
Type10 IR	Touchfree Mains power	Dual	Stainless Steel	Brushed SS		115.936.SN.6	-	115.956.SN.6	
	Touchfree Battery power					115.937.SN.6	-	-	
Remote mounted electrical switch	Touchfree Mains power		Metal Glass	By others			115.936.14.6	-	115.956.14.6
	Touchfree Battery power						115.937.14.6	-	-
						115.862.00.6	-	115.955.00.6	
						115.885.00.6	-	-	
Accessories for Touchfree Actuators									
Transformer with 12VDC output for AC powered hands-free actuator (order separately)						115.861.00.6**		-	
Extension mains cable 12V						244.094.00.1*		-	
Choose from Service Opening Options Below									
Manul flush plate*									
Pair as design element or manual override						Sigma01 to Sigma60	-	Omega20 to Omega60	
Surface Even Cover Plates for use with Flush Buttons*									
Customizable mechansim†					-	115.696.00.1 ¹	-	115.087.00.1	
Rough-in set (REQUIRED)					-	243.168.00.1	-	-	
Pre-made Cover Plate - combine with customizable mechanism above**					Alpine White	CR115-6111	-	CR115-8111	
					Matte Black	CR115-6161	-	CR115-8161	
					Brushed stainless	CR115-6FW1	-	CR115-8FW1	
Customizable mechansim w/ accent frame†					-	115.697.00.1 ¹	-	115.088.00.1 ¹	
Rough-in set (REQUIRED)					-	243.168.00.1	-	-	
Surface Mounted Cover Plates for use with Flush Buttons*									
Pre-made Cover Plate			Glass	White Glass	115.766.SI.1	-	115.082.SI.1		
			Stainless Steel	Brushed stainless	115.764.FW.1	-	-		
				Customizable	115.766.00.1	-	115.082.00.1		
			Plastic	Alpine White	115.768.11.1	-	-		
				Polished Chrome	115.768.21.1	-	-		
				Matte Chrome	115.768.46.1	-	-		

*Optional **Recommended ¹For tile, stone or other hard surfaced walls only

REMOTE CONVENIENCE

The pneumatic components of the Geberit Type 01 and Rectangle remote actuators have been tested for years of stress and require less than five (5) pounds of force to actuate the flush. Air pressure transmits force from the flush control to the flush valve. Geberit cover plates complement the remote flush, providing easy access to working parts of the system. The remote button is a convenient, easy to use option.



Style	Actuation	Flush	Material	Finish	1.6/0.8 GPF	111.335.00.5	111.798.00.1	111.012.00.1
					1.28/0.8 GPF	111.902.00.5	111.597.00.1	111.018.00.1
Dual-Flush Buttons for Concealed or Furniture/Cabinet Installations								
Type01	Manual - Touch	Dual	Plastic	Alpine White	116.044.11.1	116.045.11.1	116.044.11.1	116.044.11.1
Rectangle				Polished Chrome	116.052.21.1	116.054.21.1	116.052.21.1	
Choose from Service Opening Options Below								
Surface Even Cover Plates for use with Flush Buttons*								
Customizable mechanism†					-	115.696.00.1 [†]	115.696.00.1 [†]	115.087.00.1 [†]
Rough-in set (REQUIRED)					-	243.168.00.1	-	-
Pre-made Cover Plate - combine with customizable mechanism above**					Alpine White	CR115-6111	CR115-6111	CR115-8111
					Matte Black	CR115-6161	CR115-6161	CR115-8161
					Brushed stainless	CR115-6FW1	CR115-6FW1	CF115-8FW1
Customizable mechanism w/ accent frame†					-	115.697.00.1 [†]	115.697.00.1 [†]	115.088.00.1 [†]
Rough-in set (REQUIRED)					-	243.168.00.1	-	-
Surface Mounted Cover Plates for use with Flush Buttons*								
Pre-made Cover Plate			Glass	White Glass	115.766.SI.1	115.766.SI.1	115.082.SI.1	-
			Stainless Steel	Brushed stainless	115.764.FW.1	115.764.FW.1	-	-
				Customizable	115.766.00.1	115.766.00.1	115.082.00.1	-
				Alpine White	115.768.11.1	115.768.11.1	-	-
			Plastic	Polished Chrome	115.768.21.1	115.768.21.1	-	-
				Matte Chrome	115.768.46.1	115.768.46.1	-	-

*Optional **Recommended †For tile, stone or other hard surfaced walls only

SMOOTH FLUSH MOUNT

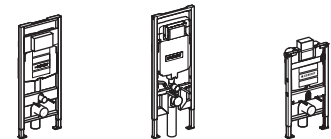
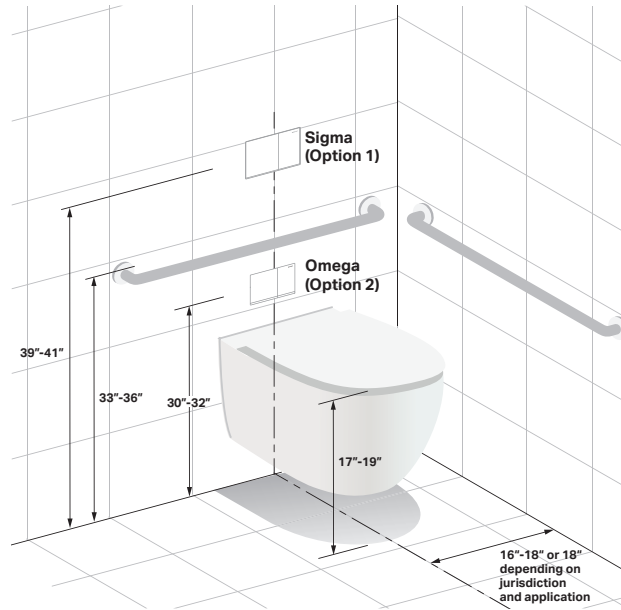
The Geberit Sigma60 and Omega 60 actuator plate mounts evenly with the wall surface for a sleek, safe minimalist appearance. Its streamlined design has no protruding edges, enhancing the feeling of spaciousness and safety in your bathroom.



Sigma60



Omega60



Style	Actuation	Flush	Material	Finish	1.6/0.8 GPF	111.335.00.5	111.798.00.1	111.012.00.1
					1.28/0.8 GPF	111.902.00.5	111.597.00.1	111.018.00.1
Dual-Flush Actuator Plates								
Sigma60 [†]	Manual	Dual	Die Cast Zinc	Brushed chrome / polished chrome accent	115.640.GH.1	115.640.GH.1	—	—
			Glass	White glass / polished chrome accent	115.640.SI.1	115.640.SI.1	—	—
				Black glass / polished chrome accent	115.640.SJ.1	115.640.SJ.1	—	—
				Lava glass / polished chrome accent	115.640.JK.1	115.640.JK.1	—	—
				Sand grey glass / polished chrome accent	115.640.JL.1	115.640.JL.1	—	—
Rough-in set (REQUIRED)					243.168.00.1	—	—	—
Cover frame to hide gaps*			Die Cast Zinc	Polished Chrome	115.641.21.1	115.641.21.1	—	—
				Brushed Chrome	115.641.GH.1	115.641.GH.1	—	—
Omega60 [†]	Manual	Dual	Die Cast Zinc	Brushed chrome / polished chrome accent	—	—	—	115.081.GH.1
			Glass	White glass / polished chrome accent	—	—	—	115.081.SI.1
				Black glass / polished chrome accent	—	—	—	115.081.SJ.1
				Lava glass / polished chrome accent	—	—	—	115.081.JK.1
				Sand grey glass / polished chrome accent	—	—	—	115.081.JL.1
Cover frame to hide gaps*			Die Cast Zinc	Polished Chrome	—	—	—	115.086.21.1
				Brushed Chrome	—	—	—	115.086.GH.1

*Optional **Recommended [†]For tile, stone or other hard surfaced walls only


A TOUCH-FREE FLUSH

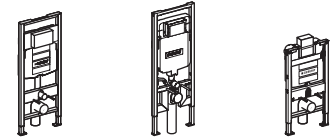
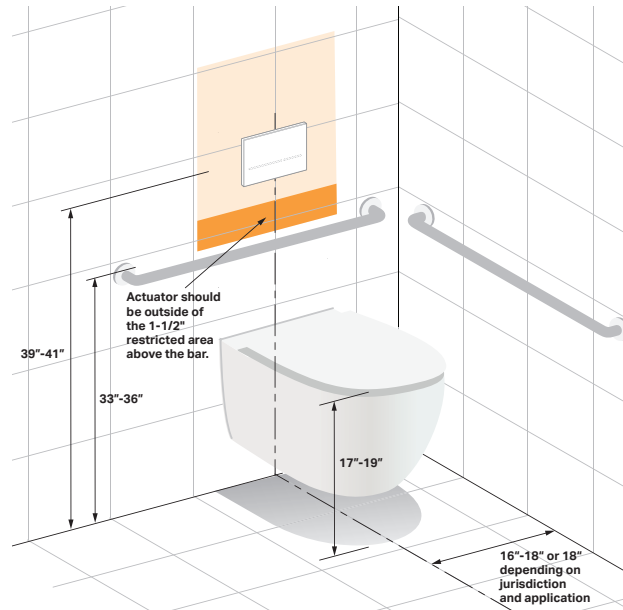
Our Geberit Sigma10 and Sigma80 hands-free flush controls use an electronic sensor to activate the flush. This is a no-touch flush plate, the ultimate in accessibility.



Sigma80 



Sigma10 



Style	Actuation	Flush	Material	Finish	1.6/0.8 GPF	111.335.00.5	111.798.00.1	111.012.00.1
					1.28/0.8 GPF	111.902.00.5	111.597.00.1	111.018.00.1
Dual-Flush Buttons for Concealed Installations								
Sigma10	Touchfree Mains power, with manual override	Dual	Stainless Steel	Matte black / Gloss black accent	115.890.16.6	115.856.16.6		
				Gloss black / Matte black accent	115.890.DW.6	115.856.DW.6		
				Brushed SS / Polished SS accent	115.890.SN.6	115.856.SN.6		
	Touchfree Mains power		Plastic	Matte black / Gloss black accent	115.907.16.6	—		
				Gloss black / Matte black accent	115.907.DW.6	—		
				Matte chrome / Polished chrome accent	115.907.JQ.6	—		
				Polished chrome / Matte chrome accent	115.907.KH.6	—		
				Gloss white / Polished chrome accent	115.907.KJ.6	—		
				Gloss white / Polished gold accent	115.907.KK.6	—		
				Gloss black / Polished chrome accent	115.907.KM.6	—		
	Touchfree Battery power, with manual override		Stainless Steel	Brushed SS / Polished SS accent	115.907.SN.6	—		
				Matte black / Gloss black accent	115.891.16.6	—		
				Gloss black / Matte black accent	115.891.DW.6	—		
	Touchfree Battery power		Plastic	Brushed SS / Polished SS accent	115.891.SN.6	—		
				Matte black / Gloss black accent	115.908.16.6	—		
				Gloss black / Matte black accent	115.908.DW.6	—		
Matte chrome / Polished chrome accent		115.908.JQ.6		—				
Polished chrome / Matte chrome accent		115.908.KH.6		—				
Gloss white / Polished chrome accent		115.908.KJ.6		—				
Gloss white / Polished gold accent		115.908.KK.6		—				
Sigma80	Touchfree Mains power	Stainless Steel	Gloss black / Polished chrome accent	115.908.KM.6	—			
			Brushed SS / Polished SS accent	115.908.SN.6	—			
			Black glass / Matte black accent	116.090.SG.6	116.092.SG.6			
			Mirror glass / Matte black accent	116.090.SM.6	116.092.SM.6			
Accessories for Touchfree Actuators								
Transformer with 12VDC output for AC powered hands-free actuator (order separately)					115.861.00.6**			
Extension mains cable 12V					244.094.00.1*			

*Optional **Recommended †For tile, stone or other hard surfaced walls only

WATER SAVING SINGLE FLUSH

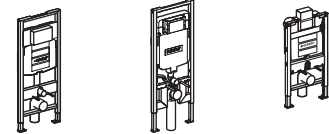
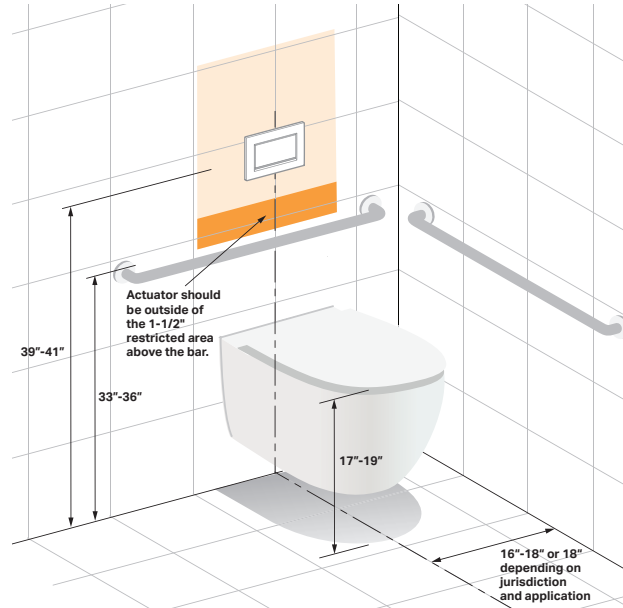
Geberit has equipped the single flush Sigma10 and Sigma30 flush plates with a stop-and-go flush function that lets the user interrupt the standard flush cycle: you decide precisely how much water you want to use (or save). Simply push to flush, and push again to stop. Not all jurisdictions accept dual-flush. Geberit offers this unique solution for those areas.



Sigma30



Sigma10



Style	Actuation	Flush	Material	Finish	1.6/0.8 GPF	111.335.00.5	111.798.00.1	111.012.00.1
					1.28/0.8 GPF	111.902.00.5	111.597.00.1	111.018.00.1
Single-Flush Buttons for Concealed Installations								
Sigma10 [†]	Manual	Single	Stainless Steel	Black matte / Gloss black accent	115.758.16.5	115.758.16.5		
				Black matte / Polished chrome accent	115.758.14.5	115.758.14.5		
				White matte / Gloss white accent	115.758.01.5	115.758.01.5		
				White matte / Polished chrome accent	115.758.JT.5	115.758.JT.5		
			Plastic	Matte chrome / Polished chrome accent	115.758.JQ.5	115.758.JQ.5		
				Polished chrome / Matte chrome accent	115.758.KH.5	115.758.KH.5		
				Gloss white / Polished chrome accent	115.758.KJ.5	115.758.KJ.5		
				Gloss white / Polished gold accent	115.758.KK.5	115.758.KK.5		
Sigma30 [†]	Manual	Single	Stainless Steel	Gloss black / Polished chrome accent	115.758.KM.5	115.758.KM.5		
				Brushed SS / Polished SS accent	115.758.SN.5	115.758.SN.5		
			Die Cast Zinc	Black matte / Polished chrome accent	115.893.14.1	115.893.14.1		
				Polished gold / Matte gold accent	115.893.45.1	115.893.45.1		
				White matte / Polished chrome accent	115.893.JT.1	115.893.JT.1		
				Gloss white / Polished chrome accent	115.893.KJ.1	115.893.KJ.1		
				Brushed chrome / Polished chrome accent	115.893.KX.1	115.893.KX.1		
				Polished chrome / Brushed chrome accent	115.893.KY.1	115.893.KY.1		

[†]Not intended to be sold in California with 1.6 GPF units.







Geberit

2100 S. Clearwater Drive
Des Plaines, IL 60018
USA

P 800-566-2100
F 847-849-1845

www.geberit.us

Geberit North America is part of the Geberit Group, a European market leader and global provider of sanitary technology. Located in Des Plaines, Illinois, Geberit North America provides concealed tank and carrier systems for wall-hung and floor-mounted toilets and fixtures. Geberit systems improve the look of any bathroom by hiding the unsightly toilet tank. Replacing a standard tank and toilet with the Geberit system results in more usable space, improved hygiene and better accessibility. The unique dual-flush valve saves water and is practically maintenance free. Geberit also offers cable-controlled bath waste and overflows in a variety of designer finishes. Critical working parts are outside the waterway, ensuring years of trouble-free operation.

For more information, contact your Geberit sales representative, call 800/566-2100 or go to www.geberit.us

